



## Die häufigsten Taktarten

PN10



PR18



PR26



PR04



## Weitere Taktarten

PR25



PR25



PR25



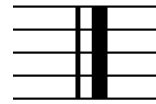
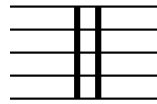
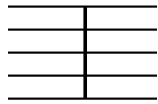
PR25



PR25



## Taktstriche



PN09



## Sonstiges

- PR04 3/4 und 4/4 (hörend unterscheiden)
- PR28 Taktarten (in Kombination)
- PM12 Auftakt / Volltakt